



REPORT TO THE COMMUNITY



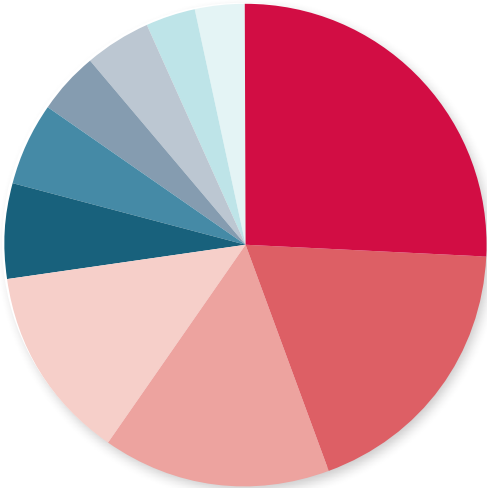
Community impact: gifts and grants



Donations from **1,179**
generous donors like you
in 2022 totaled **\$8.1 million**,
totaling **\$108 million**
in donations so far over the
22-year history of DCCF.



In 2022, you granted **\$6 million** to **450** nonprofit organizations, bringing the total amount granted by DCCF over its 22-year history to **\$55 million+**.



2022 GRANT FUNDING BY INTEREST AREA

Human Services	24%
Education	17%
Arts/Culture.	14%
Religion Related	12%
Food/Agriculture/Nutrition	6%
Housing/Shelter	5%
Health Care	4%
Mental Health/Crisis Intervention	4%
Environmental	3%
Youth Development	3%

Remaining 8% of total grants consists of 5 other interest areas.



Donors like you drive positive change in Douglas County

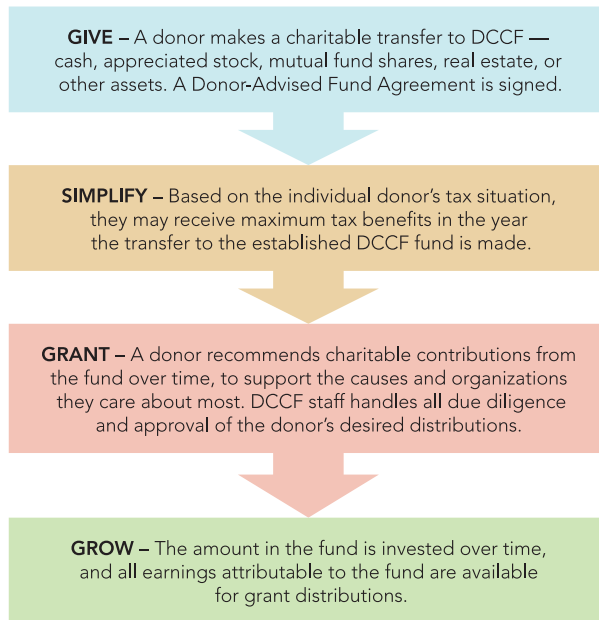
The Douglas County Community Foundation connects the diverse citizens and communities of Douglas County through charitable action.

Our mission is to enrich the quality of life in the communities of Douglas County by:

- 1) Building philanthropic resources and relationships;
- 2) Providing attractive options for donors to make philanthropic contributions;
- 3) Being a catalyst for the betterment of the lives of the citizens of Douglas County.



UNDERSTANDING DCCF DONOR-ADVISED FUNDS



To meet our mission, we offer donors the opportunity to achieve their philanthropic and financial goals by establishing charitable donor-advised funds (DAF). The process for setting up the fund is simple, and we provide highly personalized service tailored to the charitable and financial interests of each individual.

Statement of Financial Position

As of December 31, 2022

Current assets

Cash and cash equivalents	\$ 3,571,198
Investments	75,653,218
Accounts receivable	1,000
Cash value life insurance	123,512
<i>Total current assets</i>	<i>79,348,928</i>

Current liabilities

Accounts payable	\$ 47,733
Grants payable	64,257
Accrued salaries, benefits, and taxes	5,530
Liability related to split interest agreements	581,550
Agency funds payable	12,403,220
<i>Total current liabilities</i>	<i>13,102,290</i>
<i>Total net assets</i>	<i>66,246,638</i>
<i>Total liabilities and net assets</i>	<i>\$ 79,348,928</i>

Tribute & Memorial Funds

Newsletter Sign-up

Donor Portal

News

Contact

Search Website



Donors

Nonprofits

Advisors

Who We Are

Community Impact

GIVE NOW





STAY CONNECTED



DCCF Mailing Preferences

First Name *

Last Name *

Address *

City *

State *

Zip Code *

Email Address *

Choose from the below options.

☐ I'm not a robot



Update

Visit **dccfoundation.org** to
stay informed and connected!

Board of Directors and Staff



Web Golden,
Chair
Attorney, Stevens
and Brand, LLP



Matthew D. All
President/CEO,
Blue Cross Blue
Shield of Kansas



Justin Cordova
Partner,
CEK Insurance



Becki Dick
Owner,
Custom Mobile
Equipment, Inc.



Bob Fairchild
Senior Judge and
Retired Douglas
County District
Court Chief Judge



Melissa Padgett
Community
Volunteer



Dan Simons
President,
The World
Company



Beth Stella
Community
Volunteer



Deanell Reece
Tacha
United States
Circuit Judge,
United States
Court of Appeals
for the 10th Circuit
(Retired)



Steve Warren
Distinguished
Professor,
Dole Human
Development
Center, University
of Kansas



Katie Winter
Director,
Winter School



LaVerne Epp
1950–2023



Chip Blaser
Executive Director



Marinda Ochs
Administrative
Officer



Heather Hoy
Director of
Philanthropy
and Community
Relations



Lori Trenholm
Director of
Community
Investment



900 Massachusetts, Suite 406
Lawrence, KS 66044-2868

dccfoundation.org

